

1
PROPRIETARY
 THIS DOCUMENT CONTAINS PROPRIETARY INFORMATION. ANY REPRODUCTION, DISCLOSURE, OR USE OF THIS DOCUMENT IS EXPRESSLY PROHIBITED EXCEPT BY WRITTEN AGREEMENT WITH CRITICAL LINK, LLC.

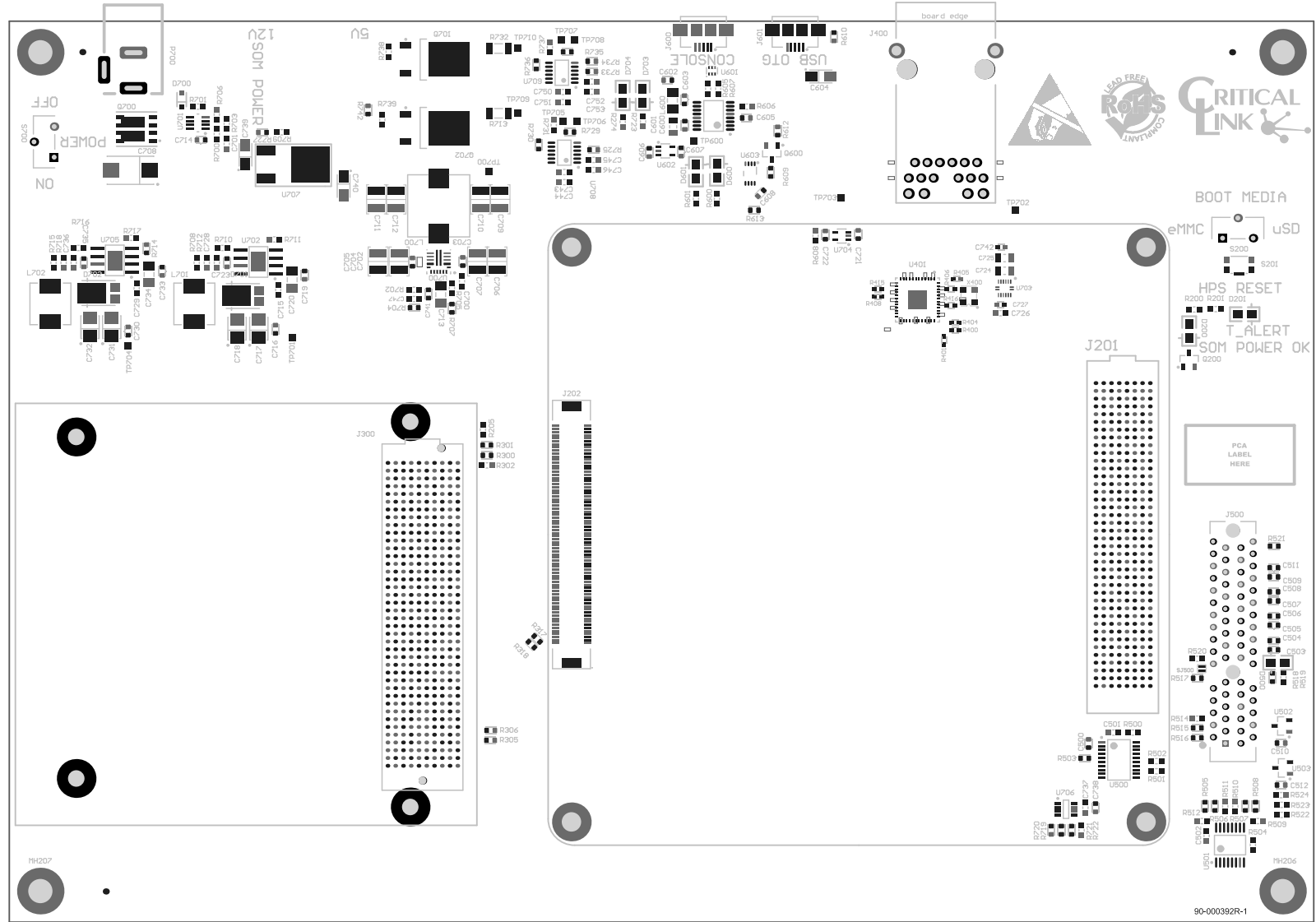
General Notes:

All dimensions are in mils (0.001") unless otherwise specified.
 Tolerance on all dimensions shall be ±.005" unless otherwise specified.

Assembly Notes:

1. Assemble board per IPC A-610C Class II.
2. RoHS compliant, Lead-Free solder process required.
3. Assembly shall be with no clean solder paste.

ECR	REV	DESCRIPTION	INITIALS	DATE	
	1718	-1A	Initial release.	OV	02/18/19



ENGINEER: K. Connors	TITLE: PCA, MitySOM_A10S Dev Board, Gen 2			 Critical Link, LLC 6712 Brooklawn Pkwy Syracuse, NY 13211 315.425.4045 www.criticallink.com
PCB DESIGNER: Huy Le	PART NO: 80-001218RI-1	REV: A	SIZE: B	
DATE: 3/11/2019	PRINT NAME: Top Assembly.		SCALE: SCALE: 0.98	
FILE NAME: A10S_DevBoard.PcbDoc				

