

1  
**PROPRIETARY**  
 THIS DOCUMENT CONTAINS PROPRIETARY INFORMATION. ANY REPRODUCTION, DISCLOSURE, OR USE OF THIS DOCUMENT IS EXPRESSLY PROHIBITED EXCEPT BY WRITTEN AGREEMENT WITH CRITICAL LINK, LLC.

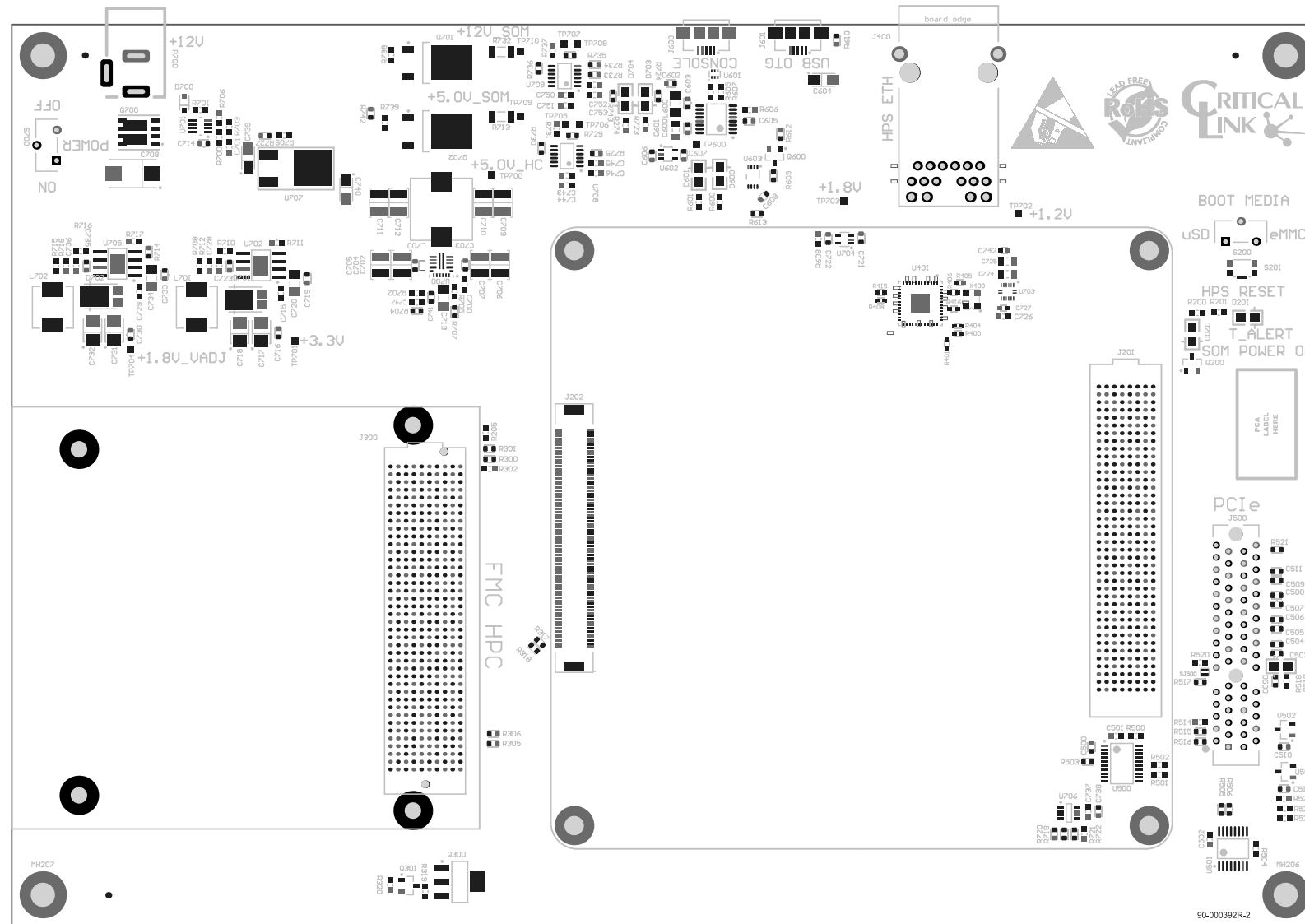
**General Notes:**

All dimensions are in mils (0.001") unless otherwise specified.  
 Tolerance on all dimensions shall be ±.005" unless otherwise specified.

**Assembly Notes:**

1. Assemble board per IPC A-610C Class II.
2. RoHS compliant, Lead-Free solder process required.
3. Assembly shall be with no clean solder paste.

ECR	REV	DESCRIPTION	INITIALS	DATE	
	1718	-1A	Initial release.	OV	02/18/19
	1817	-2A	Mod kit	OV	10/02/19
	1932	-3A	Initial release debug	OV	02/10/20



ENGINEER: K. Connors	TITLE: PCA, MitySOM_A10S Dev Board, Gen 2			 Critical Link, LLC 6712 Brooklawn Pkwy Syracuse, NY 13211 315.425.4045 www.criticallink.com
PCB DESIGNER: Huy Le	PART NO: 80-001218RI-3		REV: A	
DATE: 2/14/2020	PRINT NAME: Top Assembly.		SCALE: SCALE: 0.98	
FILE NAME: A10S_DevBoard.PcbDoc				

