

1 PROPRIETARY
THIS DOCUMENT CONTAINS PROPRIETARY INFORMATION. ANY REPRODUCTION, DISCLOSURE, OR USE OF THIS DOCUMENT IS EXPRESSLY PROHIBITED EXCEPT BY WRITTEN AGREEMENT WITH CRITICAL LINK, LLC.

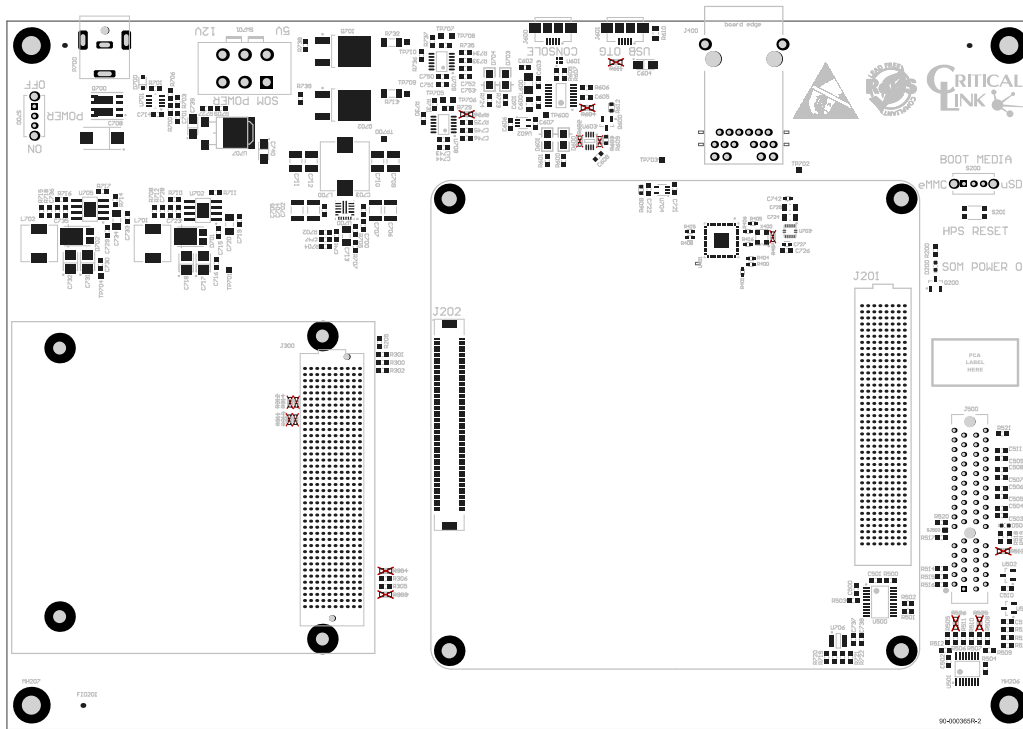
General Notes:


All dimensions are in mils (0.001") unless otherwise specified.
Tolerance on all dimensions shall be ± 0.005 " unless otherwise specified.

Assembly Notes:

1. Assemble board per IPC A-610C Class II.
2. RoHS compliant, Lead-Free solder process required.
3. Assembly shall be be with no clean solder paste.

| ECR | REV | DESCRIPTION | INITIALS | DATE |
|------|-----|--|----------|---------|
| 1558 | -1A | Initial release. | HL | 5/07/18 |
| 1656 | -3B | Implemented modkit reworks in "copper" | AKS | 9/03/18 |
| | | | | |
| | | | | |
| | | | | |



| | | | |
|------------------------------------|---------------------------------------|------------|--|
| ENGINEER: K. Connors | TITLE: PCA, MitySOM_A10S Dev Board | |  Critical Link, LLC 6712 Brooklawn Pkwy Syracuse, NY 13211 315.425.4045 www.criticallink.com |
| PCB DESIGNER: Huy Le | PART NO: 80-001127RC-3 | | |
| DATE: 9/6/2018 | REV: B | SIZE: B | SCALE: SCALE: 0.64 |
| FILE NAME: A10S_DevBoard.PcbDoc | PRINT NAME: Top Assembly Drawing | | |

